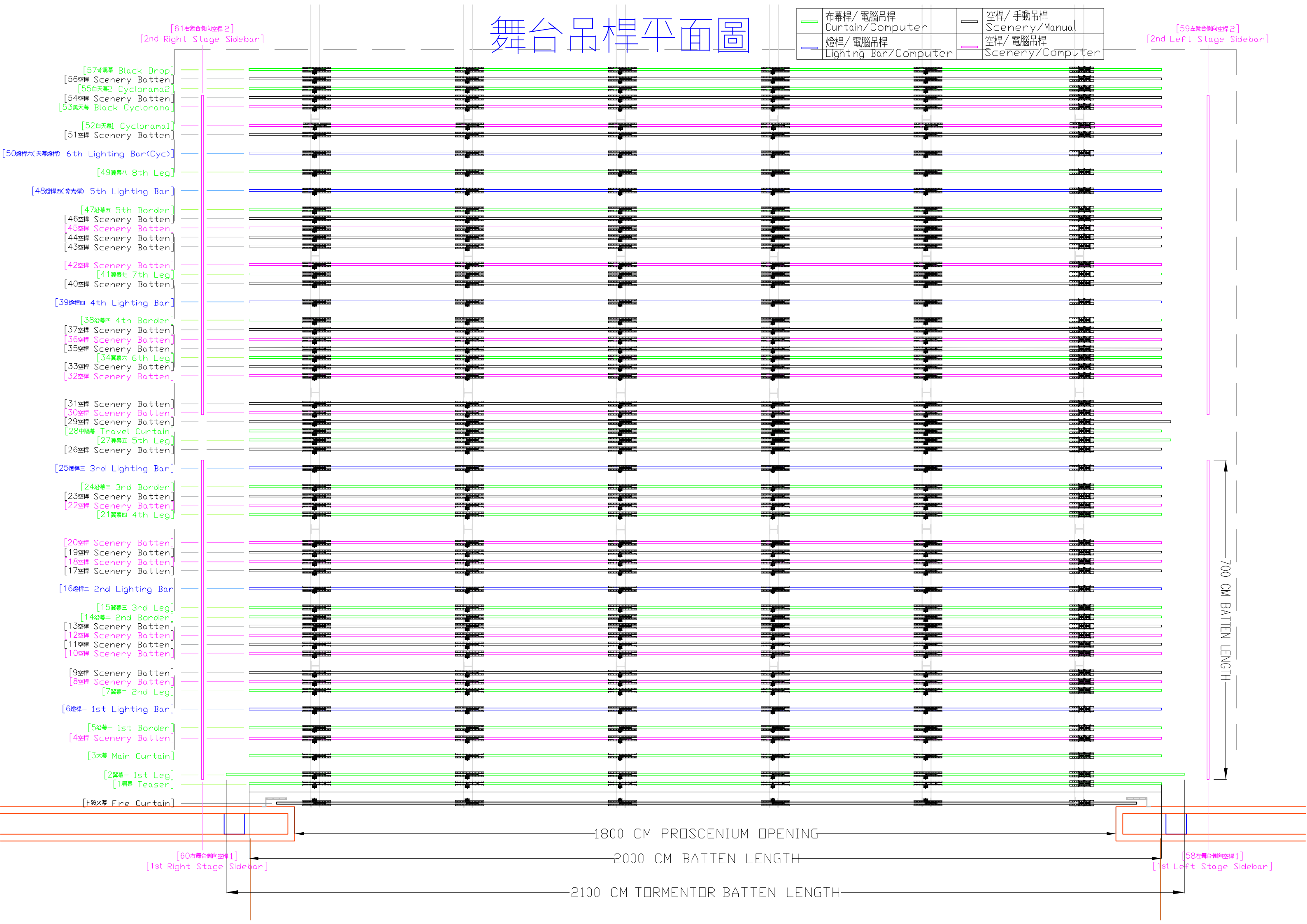


舞台吊桿平面圖

— 布幕桿/電腦吊桿 Curtain/Computer	— 空桿/手動吊桿 Scenery/Manual
— 燈桿/電腦吊桿 Lighting Bar/Computer	— 空桿/電腦吊桿 Scenery/Computer



[61右舞台側向空桿2]
[2nd Right Stage Sidebar]

[59左舞台側向空桿2]
[2nd Left Stage Sidebar]

- [57背黑幕 Black Drop]
- [56空桿 Scenery Batten]
- [55白天幕2 Cyclorama2]
- [54空桿 Scenery Batten]
- [53黑天幕 Black Cyclorama]
- [52白天幕1 Cyclorama1]
- [51空桿 Scenery Batten]
- [50燈桿六(天幕燈桿) 6th Lighting Bar(Cyc)]
- [49翼幕八 8th Leg]
- [48燈桿五(燈光桿) 5th Lighting Bar]
- [47沿幕五 5th Border]
- [46空桿 Scenery Batten]
- [45空桿 Scenery Batten]
- [44空桿 Scenery Batten]
- [43空桿 Scenery Batten]
- [42空桿 Scenery Batten]
- [41翼幕七 7th Leg]
- [40空桿 Scenery Batten]
- [39燈桿四 4th Lighting Bar]
- [38沿幕四 4th Border]
- [37空桿 Scenery Batten]
- [36空桿 Scenery Batten]
- [35空桿 Scenery Batten]
- [34翼幕六 6th Leg]
- [33空桿 Scenery Batten]
- [32空桿 Scenery Batten]
- [31空桿 Scenery Batten]
- [30空桿 Scenery Batten]
- [29空桿 Scenery Batten]
- [28中隔幕 Travel Curtain]
- [27翼幕五 5th Leg]
- [26空桿 Scenery Batten]
- [25燈桿三 3rd Lighting Bar]
- [24沿幕三 3rd Border]
- [23空桿 Scenery Batten]
- [22空桿 Scenery Batten]
- [21翼幕四 4th Leg]
- [20空桿 Scenery Batten]
- [19空桿 Scenery Batten]
- [18空桿 Scenery Batten]
- [17空桿 Scenery Batten]
- [16燈桿二 2nd Lighting Bar]
- [15翼幕三 3rd Leg]
- [14沿幕二 2nd Border]
- [13空桿 Scenery Batten]
- [12空桿 Scenery Batten]
- [11空桿 Scenery Batten]
- [10空桿 Scenery Batten]
- [9空桿 Scenery Batten]
- [8空桿 Scenery Batten]
- [7翼幕二 2nd Leg]
- [6燈桿一 1st Lighting Bar]
- [5沿幕一 1st Border]
- [4空桿 Scenery Batten]
- [3大幕 Main Curtain]
- [2翼幕一 1st Leg]
- [1扇幕 Teaser]
- [F防火幕 Fire Curtain]

700 CM BATTEN LENGTH

1800 CM PROSCENIUM OPENING

2000 CM BATTEN LENGTH

2100 CM TORMENTOR BATTEN LENGTH

[60右舞台側向空桿1]
[1st Right Stage Sidebar]

[58左舞台側向空桿1]
[1st Left Stage Sidebar]